



WRTC2026 TEST EVENT ANTENNA



✿ WRTC 2026 & LOCAL HISTORY

WRTC 2026 will be held in England, United Kingdom from the 8th – 14th July 2026. The HQ venue is Wyboston Lakes, which is in the small town of St Neots in Cambridgeshire, about 18 miles west from the historic city of Cambridge. The venue is conveniently located to access all of the sites needed for WRTC which will be located in the East of England. (see map below). We are offering an exciting trips program to allow you to discover parts of the East of England and London.

St Neots is a charming market town located in west Cambridgeshire and is the largest and fastest growing town in the county with a population over 40,000. Nestled around the banks of the River Great Ouse, the town has a rich medieval heritage and there is plenty to offer visitors from dining out to browsing shops and markets.

St Neots was named around 974 AD when a priory in the area was named after a holy man, Saint Neot, who died around the year of 877 AD. There is evidence of very early occupation in the area. In Roman times a fortified settlement was established, and present-day Eynesbury in particular became important, in addition to scattered settlements west of the River Great Ouse.

The importance of the town increased greatly in the early nineteenth century, when stage coach travel to the north of England became important. Many coaches used inns there to change and stable horses, and to refresh passengers – four such coaching inns are still operating today as public houses.

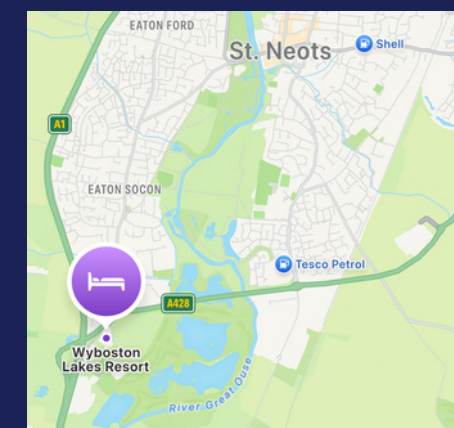
Before the Romans, there were probably small settlements in St Neots, Eynesbury and Eaton Socon in the Neolithic period, which lasted until about 1,700 BC. The Bronze Age followed, and more evidence of settlement has been found, including an axe head and evidence of a large building, possibly a temple, has been found in Eaton Ford near the Crosshall Road junction. Polished stone axes and beaker pottery of the early Bronze Age have been discovered in Eynesbury.



✿ Our HQ Venue

The WRTC 2026 HQ venue will host the event between July 8th – July 14th at Wyboston Lakes Event Centre. Accommodation will be on offer at the training and events centre in one of their three hotels with support from local hotels close to the venue. These hotels will host Competitors, Referees, Judges, Sponsors, the Organising Committee, Vounteers and Visitors.

What Three Words
modifies.truth.worlds
52.20316N, 0.28835W



HQ Address

Wyboston Lakes

The Woodlands Event Centre
Great North Road, Wyboston,
MK44 3AR



✿ How to get to Wyboston

WRTC 2026 have organised coach transfers from Heathrow and Stansted Airport on Wednesday 8th July to take you direct to the HQ venue.. Return coach transfers then run on Tuesday 14th July. Be sure to book your tickets when they are released! Tickets are limited.

● Road

Wyboston Lakes is located just off the A1 and the A421 on the A428 towards Cambridge.

- From the M1 exit at junction 13 onto the A421 proceed to the end and join the A1 for approximately 1 mile and exit onto the A428 towards Cambridge,. Wyboston Lakes Resort is on the Right hand side.
- From the M11 exit at junction 13 and take the A428 towards Bedford. Proceed until you reach St Neots and take the road signed A421 for 100 yards. The main entrance is located to the left before the traffic lights.
- From the A1 exit onto the A428 towards Cambridge. Wyboston Lakes Resort is on the Right hand side.

● Air

Luton Airport is 45 minutes away.
Stansted Airport is 45 minutes away.
Heathrow Airport is approximately 90 minutes away.

Taxi transport from the Airports is best pre-booked using booking.com

● Rail

The nearest rail station to Wyboston Lakes Resort is St Neots on the Great Northern service, a 48 minute train journey from London King's Cross. St Neots and Sandy train stations are both a 10 minute drive away.

From Heathrow Airport take the London Underground Piccadilly line to Kings Cross railway station

Local Taxi Companies

Panther Taxis: + 44 (0)1480 471 111
Jack's Taxis: + 44 (0)1480 211 110
Anglian Taxis: + 44 (0)1480 475 222

✿ Facilities at Wyboston

If you decide to stay at the HQ venue, you will benefit from a range of facilities available that the venue can offer. (Note. they may incur additional cost).

Thermal Spa

Unwind in a new Era of relaxation in Wyboston's Y-SPA which has a hydrotherapy spa pool, sauna, steam room and cold/relaxation therapy.



Golf course & Driving Range



Wyboston Lakes has a fantastic golf course, designed in 1978. You will have to work your way through multiple water hazards and some tricky par 3 holes. The driving range is open 7 days a week.

Ride Leisure

Ride leisure offers lots of outdoor water based fun activities to keep you entertained if you manage to get any free time!



Please note – we have no control over these activities. Please contact Wyboston Lakes directly to obtain availability and book the activities. Please only do this after you have confirmation of your accommodation through us.

www.wybostonlakes.co.uk

✿ Planned Excursions

You will need to book all of your excursions direct with the coach company. Look out for when the booking link is released. These trips are being put on especially for WRTC 2026.

DUXFORD IMPERIAL WAR MUSEUM

From the early days of flight, through to the dramatic days of the Second World War and the technological advances of the Cold War, IWM Duxford has played a central role in some of the most significant periods of 20th-century history.

Inside every hangar and exhibition, you'll discover iconic aircraft, see historic objects within the collections and uncover hundreds of personal stories of the many lives impacted by conflict.

BLETCHLEY PARK & THE RSGB NATIONAL RADIO CENTRE

Once the top-secret home of the World War Two Codebreakers, Bletchley Park is now a vibrant heritage attraction, open daily. Immersive films, interactive displays, museum collections and faithfully recreated WW2 rooms will guide you on a journey to discover the past at Bletchley Park. Exhibitions, set within beautifully restored historic buildings, tell the story of this once top-secret operation. Find out more about the brilliant minds and complex machines that made this vital work possible, and discover the global impact Bletchley Park had on the outcome of WW2.

The RSGB National Radio Centre introduces 80,000 visitors a year to amateur radio and you can operate GB3RS during your visit. It's a must-visit excursion for anyone interested in radio communication and its history. The NRC houses a collection of historic radio equipment, interactive exhibits, and educational resources that provide visitors with an insight into the development and evolution of radio technology. One of the key attractions of the NRC is the amateur radio station, GB3RS.

If you are a member of the RSGB you will be able to gain FREE entry to Bletchley park. Please visit the RSGB website if you are interested in becoming a a member. rsgb.org/join If you would like to find out more about the NRC, please visit rsgb.org/nrc

LONDON

Dropping off and picking up on the Thames embankment, Big Ben, Houses of Parliament, Westminster Abbey, Buckingham Palace, Trafalgar square and the London eye are all within about a 20min walk.

CAMBRIDGE

The city of Cambridge, famous for its university, has an abundance of colleges to visit with parks, museums and plenty of high street shopping.

HUNSTANTON

New Hunstanton beach is full of candy floss, arcades, fun fairs and amusements as well as the Sea Life Centre, whilst the Old Hunstanton provides excellent kite and wind surfing and buggying, as well as fantastic walking along the Norfolk Coast Path.

WARWICK CASTLE

Immerse yourself in over 1100 years of jaw-dropping history. A Grade I listed building and Scheduled Ancient Monument, Warwick Castle has played a prominent role in history for over 11 centuries. Visitors can climb the medieval towers and battlements, GET LOST in the World's only Horrible Histories maze and get up close to the impressive birds of prey at the Falconer's Quest show.

Itinerary

Here is a draft Itinerary. Please appreciate that things may change leading up to the event and take this as a rough guide to help you with your planning. Itinerary updates will be available on our website.

Wednesday 8th July – Arrival Day

Registration 9am–7pm
Lunch – times TBC (Pre-purchase ticket required)
Sponsor Exhibition – Day
Moonraker radio shop – Day
Dinner times Tbc (Pre-purchase ticket required)
Ham Widows Ball (Partners Cocktail Reception) 8am–10pm (Ticket required)
HQ station – available to operate from PM

Thursday 9th July – Opening ceremony

Breakfast
Competitors / Referees meeting
Meeting Referees
Sponsor Exhibition – Day
Moonraker radio shop – Day
Lunch– times TBC (Pre-purchase ticket required)
Sightseeing –Duxford – times TBC
Sightseeing – Bletchley Park & NRC Times TBC
Opening ceremony & Celebration sit down dinner – Times TBC (Ticket required)
HQ station

Friday 10th July

Breakfast
Competitors / Referees meeting(s)
Competition site / referee draw
Sponsor Exhibition – Day
Lunch – times TBC (Pre purchase ticket required)
Entrants visit sites for testing and setup
Sightseeing – London Times TBC
Sightseeing – Cambridge shopping & Cultural trip Times TBC
Dinner times (Pre purchase ticket required)
HQ station

Please make sure you purchase any lunch or dinner tickets needed as this will not be able to be purchased on the day although there are plenty of food and drink establishments in the local town of St Neots.

Itinerary

Saturday 11th July – Competition starts

Breakfast
Competitors & Referees Travel to sites – time TBC
Sponsor Exhibition – Day
Youth Prioritized WRTC practice Station
Sightseeing – London Times TBC – times tbc
Sightseeing – Hunstanton (seaside) – times Tbc
Lunch – Times TBC (pre-paid ticket required)
WRTC Contest begins
Dinner times Tbc (Pre-paid ticket required)
HQ station

Sunday 12th July – Competition End

Breakfast
Youth Prioritized WRTC practice Station
Sightseeing –Warwick castle Times TBC
Sightseeing – Cambridge shopping & Cultural trip Times TBC
Lunch – times TBC (pre-paid ticket required)
WRTC Contest Ends
Competitors & Referees arrive back from site
Log checking begins
Dinner times Tbc (pre-paid ticket required)
HQ station (free for people to operate)

Monday 13th July – Closing Ceremony

Log Checking continues
Breakfast
Moonraker radio shop & sponsor exhibition
Sightseeing –Duxford – times TBC
Sightseeing – Bletchley Park & NRC Times TBC
Lunch– times TBC (Pre-paid ticket required)
Closing Ceremony (Ticket required)
Celebratory buffet & entertainment (Ticket required)
HQ station

Tuesday 14th July – Departure Day

Please leave promptly after breakfast if possible

Please note – Trips will only go ahead if there is enough interest/bookings.
This is the same for the coach transfers from Heathrow and Stansted.
These are subject to change at the discretion of the coach company.
Look out for the link to book.

Places to eat & Drink

At Wyboston

If you have booked accommodation through us at HQ you will get your breakfast included every morning.

Not all meals are included when booking the accommodation. Please check your booking closely and take note of the meals that are included. If you wish to eat at Wyboston at other meal times (lunch/dinner) then please make sure you have pre-booked this with us. Wyboston is a training venue and you will not be able to walk in to get food on the day.

If you are not staying at HQ but wish to visit, please make sure you have purchased your entry ticket as well as any required lunch/dinner or event ticket. The Bar will be open at HQ in the evenings usually from 5pm.

Tea, coffee and water are available at the HQ venue in the Woodlands Centre free of charge at one of the refueling stations.

Alternatively, you can book a table at the Gravel Pit which is located in the Waterfront Hotel in Wyboston Lakes.

Crown Inn Pub

Opposite Wyboston Lakes is the Crown Inn pub that usually serve food until 9pm.

St Neots

There are various places to eat and drink in the local town, from traditional English pubs to chain restaurants such as Prezzo and Pizza Express.

Lakeside restaurant @ Ride

Dine on the lake in the afternoon. This is also the home of the Aqua Park at Wyboston Lakes.

Tesco Extra

If you fancy something cheap and quick, there is a Tesco Extra (Supermarket) close by.

The address is
Tesco St Neots Extra
Barford Road
PE19 2SA

❁ Ham Widows Ball

An Inclusive non-radio event open to all the friends, partners, and supporters of Ham Radio

Join us for an evening filled with cocktails, nibbles and entertainment where you can meet new people and have fun. This event will take place on Wednesday 8th July from approx 8pm (tbc)

We are extremely grateful to YASME for their sole sponsorship of the Ham Widows Ball enabling us to offer this as a FREE event to whoever wishes to attend.

Please note: This is a FREE event, however it is an exclusive event that requires a ticket. Please make sure you have booked your ticket in advance.



The Rosewood suite bar

❁ Opening Ceremony

Join us for an exciting event on Thursday 9th July for the official opening of WRTC UK 2026. During the evening there will be an Olympic style ceremony and a celebratory dinner.



This is an exclusive ticketed event, Please make sure you have your ticket for this event included in your booking.

❁ Closing Ceremony

We welcome you to join us for the evening of Monday 13th July for our official Closing ceremony.

After the Ceremony there will be a meal and entertainment to continue the celebrations.

We would love for all of our volunteers to come and celebrate with us as an appreciation of their efforts.

This is an exclusive event and will require a ticket. Please make sure you have this included in your package if you wish to attend.

If you are a volunteer at WRTC2026 but you are not staying at HQ, you will receive an invite to this event free of charge.



The courtyard at Wyboston

These are our main social events, however if you have your entry ticket to WRTC HQ then please feel free to meet at HQ, in the bar or restaurant area to socialise.

❁ The Contest

Keep up with the action of the contest at HQ with screens showing the live scores produced by World Radio League. The HQ radio station will be available to operate throughout the contest including overnight, giving priority to the youth attendees. Tea, coffee, water will be available in the break out spaces.

Please note: if you do not have a daily entry ticket or a package with tickets included, you will NOT be able to gain entry to HQ.

❁ Taking Part in WRTC2026

If you become a Competitor, Referee or Judge at WRTC 2026 we are very pleased to say we will only be asking for a contribution towards your stay.

Each Competitor, Referee and Judge will be required to contribute **£650** towards their costs.

This will include

- Welcome Pack
- 4 star accommodation with breakfast whilst staying at HQ
- Daily entry to HQ
- Opening Ceremony ticket with Celebratory dinner on Thursday
- Transport to and from your site (if applicable)
- Food and drink during the contest
- If you are a judge/adjudicator, snacks will be provided throughout the night on Sunday.
- Closing Ceremony ticket with Celebratory dinner and entertainment on Monday
- Dinner at HQ on Wednesday, Friday & Sunday

Please Note : If you require Lunch at HQ, this must be booked and paid for separately . You will not be able to get lunch at HQ on demand. (pre- book only)

Please Note : If you are bringing a partner along to enjoy the experience, this will be charged at a standard double room spectator rate.

❁ Volunteering

We have various volunteering roles available, this ranges between many different roles and may be at HQ or at a site/ Cluster. If you are selected as a volunteer we will discuss your role with you and work out if any additional support for you is needed.

If you have registered your interest in becoming a volunteer, we thank you! WRTC could not run without volunteers. We will be in contact soon with what will be needed from you and how we may need you to help us.

If you haven't registered your interest to become a volunteer, please visit our website and complete the "contact-volunteers" form



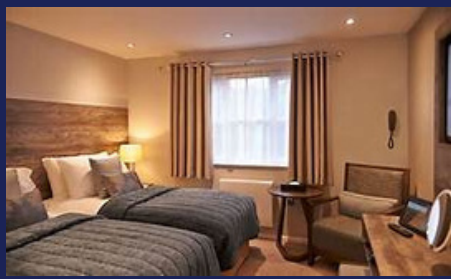
www.wrtc2026.org/contact-volunteers/

✿ Visiting as a spectator

We are excited to welcome you as a visitor to our event. There is plenty for you to do and enjoy as well as keeping up to date with what is happening with the contest itself. We have organised the event so you have maximum freedom to plan your week how you wish in terms of sightseeing and lunch/dinners.

We are very fortunate to have secured a beautiful venue with 4 star accommodation facilities with the option for our guests to take part in various activities on offer.

We have two rates on offer: Single Occupancy and Double/Twin Occupancy. We are pleased to be in a position to offer the accommodation and events as set out below:



Included in your stay

- 6 nights of 4 star accommodation with breakfast each morning.
- Entry to HQ every day and evening
- Welcome Buffet on Wednesday
- Opening Ceremony & Celebratory dinner on Thursday
- Closing Ceremony & Celebratory dinner with entertainment on Monday

Double/Twin Occupancy

£1099 per person including VAT

Please note: If you are a Competitor/Ref or Judge and you are bringing a partner, this is the rate your partner will be charged.

Single Occupancy

£1499 per person including VAT

Please note: we are not offering packages less than 6 nights' accommodation at HQ. If this does not fit your requirements, please get in contact with us and we will try our best to help with other options.

Daily lunch tickets and dinner tickets for Friday, Saturday & Sunday need to be purchased separately prior to the event. Pre-booking these are the only method – you will not be able to buy food at HQ on demand so we encourage you to plan your stay.

If you have completed the 'Interested in Attending' form, we will be in contact soon with details of how to book.

Any further questions please e-mail
Hospitalitywrtc2026@gmail.com

✿ Visiting HQ Adhoc

If you have decided to stay elsewhere and join us only on certain days, we hope to be able to offer you a daily entry ticket, however this is not guaranteed and will depend on how many people have booked to stay and availability. If we have some available, tickets will be released closer to the event.

We also hope to offer additional tickets to the Closing Ceremony including celebratory dinner and entertainment, however this will depend on availability and will be released closer to the event.

Keep an eye on our website & Social media for updates

Please note: If you are booking accommodation elsewhere or attempt to book direct at Wyboston, we cannot guarantee entry to the events.

✿ Lunch & Dinner tickets

Lunch tickets are available on Wednesday, Thursday, Friday, Saturday, Sunday and Monday at a cost of **£24 pp**

Dinner tickets are available Friday, Saturday, Sunday at a cost of **£36 pp**

Packed lunches are available to pre-order if you are planning some sightseeing at a cost of **£20pp**

When you receive your booking form from WRTC2026 you will be able to stipulate which days you require lunch/dinner.

Please note: if you do not have a daily entry ticket or a package with HQ entry tickets included, you will NOT be able to gain entry to HQ.

✿ How do I book?

Please make sure you have completed the registered interest form on our website. Once we have our Competitors, Referees and Judges confirmed we will be in contact to arrange your booking.

We will require a £250 per person deposit on booking.

**If you have any questions please e-mail:
Hospitalitywrtc2026@gmail.com**

Please allow time for a response.

✿ Thank you

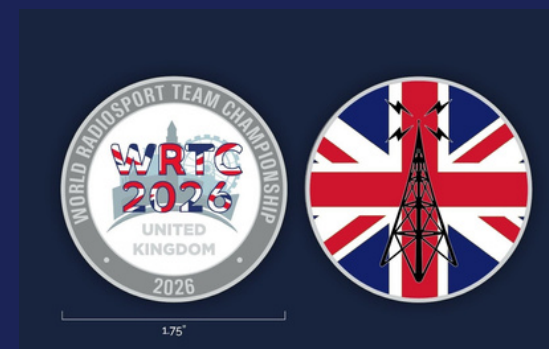
Lastly, we would like to take this opportunity to thank you for all of your continued support. As you know the organising Committee are all volunteers and are committed to making WRTC 2026 great and we know many of you are too. WRTC could not run without help from all of our sponsors and volunteers.

If you haven't yet donated, or you are able to help further, please do so by scanning below or visiting www.wrtc2026.org



Thank you for your continued support

If you have donated a minimum of £100 in 2025 you are eligible to claim your silver coin. If you donate a minimum of £100 in 2026 you will be eligible to claim your gold coin.



Lastly we would like to thank all of our sponsors, VIPs and Super VIPs for this event. We couldn't do it without you!

If you are interested in becoming a sponsor or a Super VIP and want to know the benefits of this – please get in touch at info@wrtc2026.org