

WRTC 2002 RECEIVE AUDIO SHARING PRINCIPLE

A 6.3 mm (1/4") stereo Y-adaptor should be connected to radio B phones output jack. Operator B connects ones own headphones to the adaptor. The other branch of the adapter connects audio to the audiosharing switch box.

Operator B can thus listen only radio B. Operator A can select between own audio or audio from radio B.

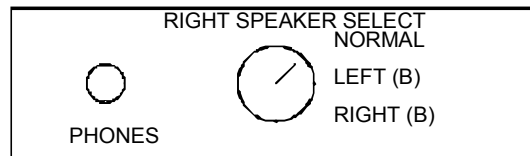
A 6.3 mm (1/4") stereo Y-adaptor should be connected to switch box audio output. Operator A and referee connects their headphones to the adapter and are thus connected in parallel.

Operator A can select right speaker function as follows:

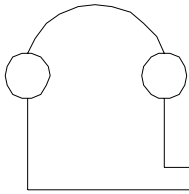
- Own right channel (NORMAL)
- Left channel of radio B (LEFT B)
- Right channel of radio B (RIGHT B)

EXAMPLE DESIGN:

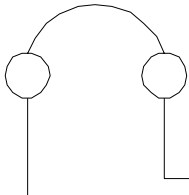
RIGHT SIDE SPEAKER SELECTOR FOR OPERATOR A



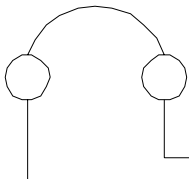
HEADPHONES FOR
OPEARTOR B



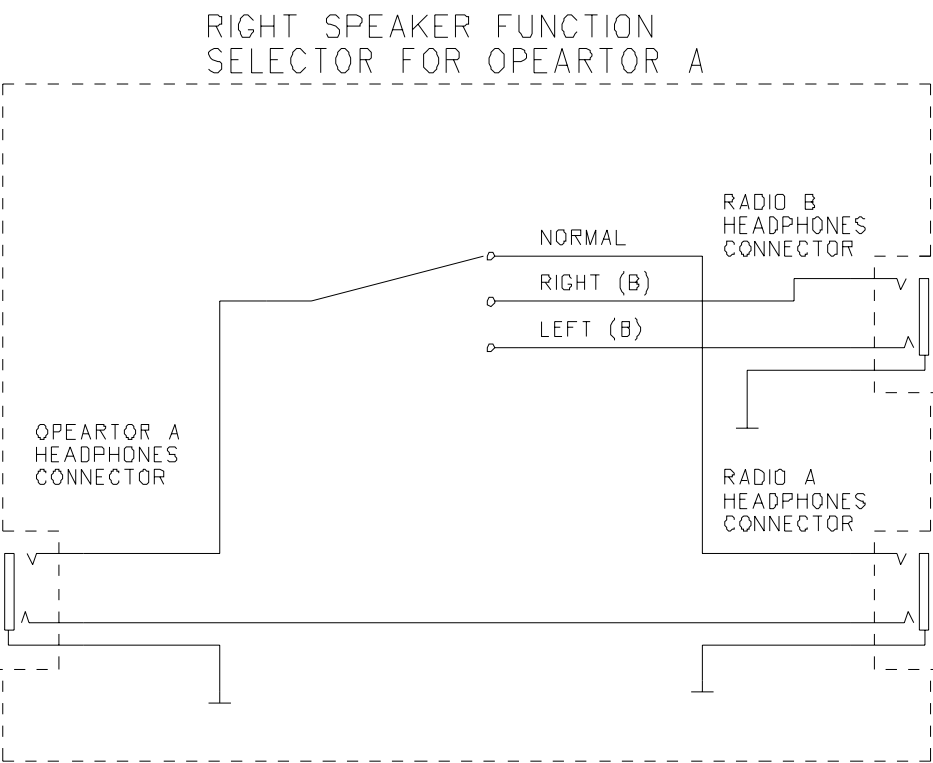
HEADPHONES FOR
OPEARTOR A



HEADPHONES FOR
REFEREE



6.35 mm (1/4")
STEREO
Y-ADAPTER



6.35 mm (1/4")
STEREO
Y-ADAPTER

RADIO B
PHONES
OUTPUT

RADIO A
PHONES
OUTPUT